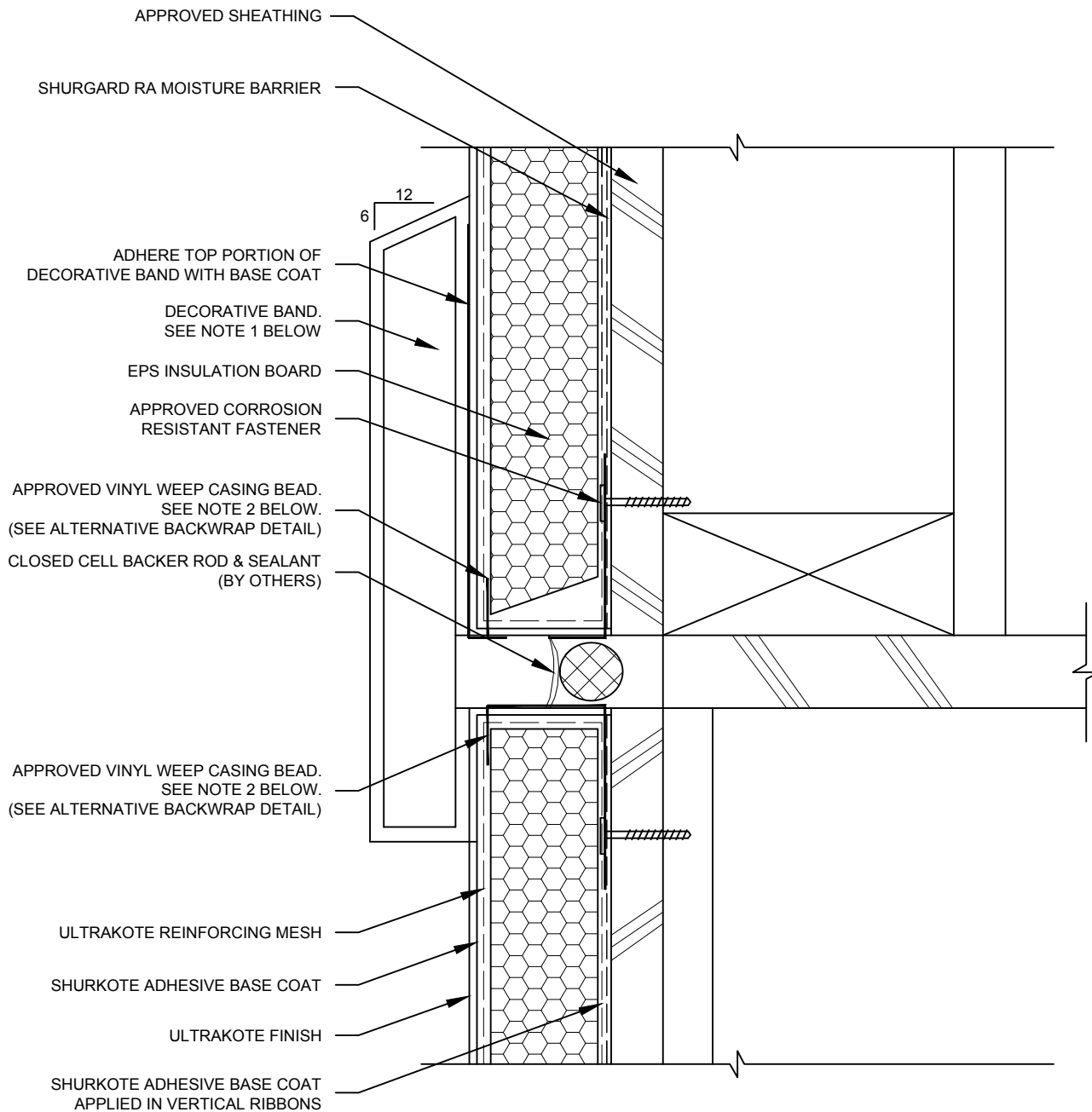


CONTROL JOINT AT FLOOR LINE IN WOOD FRAME WITH DECORATIVE BAND



NOTE:

1. DECORATIVE BAND SHALL BE PRE-WRAPPED WITH BASE COAT AND REINFORCING MESH PRIOR TO INSTALLATION.
2. MAINTAIN $\frac{1}{8}$ " SPACE BETWEEN BEVELED INSULATION AND WEEP CASING BEAD
3. AT HORIZONTAL WALL SURFACES, INCLUDING LEDGES, CAPS, SILLS, ECT., A MINIMUM SLOPE OF 6:12" IS REQUIRED.